

All details are correct at time of print. Subscribe online at sutherlandshire.nsw.gov.au/ourshire

Sutherland Shire Council acknowledges the Dharawal people as the Traditional Custodians of the land within Sutherland Shire. We value and celebrate Dharawal culture and language, and acknowledge Dharawal people's continuing connection to the land, the sea and community. We pay respect to the Elders and their families, past, present and emerging, and through them, to all Aboriginal and Torres Strait Islander peoples.



YOUR COUNCIL

EXCITING PLAYGROUND RENEWAL AT BUNDEENA

In mid-November, we officially opened the renewed Roger Summers Reserve playground in Bundeena.

The playground now features a vibrant and engaging recreational space that celebrates the unique character of the suburb.

Highlights include a Bundeena ferry-themed play area, a climbing tower with slide and various other climbing elements connecting the playground's different levels. Families can enjoy many interactive options, making it fun for all ages.

The playground's design was shaped by our community after extensive consultation in 2022. We incorporated residents' feedback to ensure the playground meets local preferences and the needs of frequent visitors.

Sutherland Shire Mayor, Councillor Jack Boyd, emphasised the Council's commitment to enhancing recreational spaces across the Shire.

"It was great to see the equipment put to good use as soon as the fences came down. The reopening was met with excitement from local families, who have shared positive feedback on the new design and range of play options."



Image: Cr Kal Glanznig and Cr Carol Provan with children enjoying the new 'Bundeena Ferry' at the renewed playground at Bundeena.

SHIREABILITY ART AWARD EXHIBITION - VOTE FOR THE PEOPLE'S CHOICE AWARD!

FRIDAY 6 TO WEDNESDAY 17 DECEMBER

Hazelhurst Arts Centre, 782 Kingsway, Gympie

Celebrate the incredible talent of artists living with disability in Sutherland Shire. The ShireABILITY Art Award Exhibition showcases stunning 2D and 3D artworks from our amazing participants.

This event takes place as part of our International Day of People with Disability celebrations. Special thanks to our sponsors Miranda RSL, Sylvanvale and Freedom Solutions.

Visit sutherlandshire.nsw.gov.au/shireability

We're upgrading playgrounds across the Sutherland Shire as part of our ongoing Playground Renewal Program. Each year, we focus on the which of our 150 playgrounds are most in need of renewal.

We're opening five new playgrounds before Christmas 2024 to improve our recreational spaces for everyone.

For more about Roger Summers playground, visit sutherlandshire.nsw.gov.au/roger-summers-upgrade



Images L to R (details): Winners from previous years - Open Award Winner Kristy Lovegrove, 'North Cronulla Pool'; Young People's Award Winner, Arabella Johnson, 'My Eye For The Future'; People's Choice Award Winner, Julie Hayes, 'Shine Bright'.

IN OUR COMMUNITY

CINEMA UNDER THE STARS CHRISTMAS SPECTACULAR

FRIDAY 6 DECEMBER AT 4:30PM TO 8:30PM

Parc Menai

Kick-start the festive season with a free outdoor screening of family favourite, *Elf* (PG). Arrive early to enjoy a vibrant Christmas market and live music including Christmas carols. Movie starts at 6.30pm.

For all Cinema under the Stars dates, visit sutherlandshire.nsw.gov.au/cinemaunderthestars



SAVE THE DATE AUSTRALIA DAY LONG WEEKEND 2025

FRIDAY 24 TO MONDAY 27 JANUARY

Reflect. Respect. Celebrate.

Save the dates! With the Australia Day long weekend fast approaching, we are excited to announce our four-day lineup of events.

Come together to:

- reflect at the Sunset Cultural Ceremony
- grab a picnic blanket and relax to the smooth sounds of Hollow Coves and Odette at the Cronulla Vibes concert
- rock on at our Australia Day Concert with Daryl Braithwaite and Baby Animals
- take a dip in the sun at our Leisure Centre Pool Parties
- catch a moonlit movie at Cinema Under the Stars.

The best part? It's all free!

Keep an eye out on updates for all the events coming your way here:

sutherlandshire.nsw.gov.au/ausday25



CAROLS IN THE SHIRE

sutherlandshire.nsw.gov.au/christmas-carols

The following information has been supplied by the event organisers, not Sutherland Shire Council - please contact them directly for further details.

SATURDAY 30 NOVEMBER

Cronulla Chamber of Commerce Carollers

10:00am to 2:00pm, Cronulla Plaza Amphitheatre

FRIDAY 6 DECEMBER

A Berry Starry Night - Lilli Pilli PS Christmas Carols

5:30pm to 7:30pm, Lilli Pilli Oval, Lilli Pilli

SATURDAY 7 DECEMBER

Cronulla Chamber of Commerce Carollers

10:00am to 2:00pm, Cronulla Plaza Amphitheatre

SUNDAY 8 DECEMBER

Carols by Candlelight

5:00pm to 9:00pm, Gunnamatta Park Cronulla

SUNDAY 8 DECEMBER

Urban Life Church Carols in the Parc

5:00pm to 8:00pm, Parc Menai

SATURDAY 14 DECEMBER

Carols for the People

6:00pm to 9:00pm, Cooper Street Reserve Engadine

SATURDAY 14 DECEMBER

Cronulla Chamber of Commerce Carollers

10:00am to 2:00pm, Cronulla Plaza Amphitheatre

SATURDAY 14 DECEMBER

Soul Revival Christmas Carols

4:00pm to 8:00pm, Biddy Giles Park Kirrawee

SATURDAY 21 DECEMBER

Southern Cross Baptist Church Carollers

10:00am to 12:00pm, Engadine Town Square

SATURDAY 21 DECEMBER

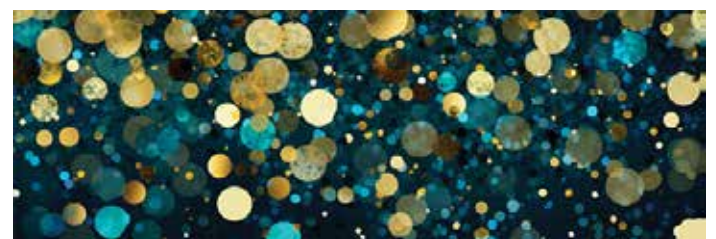
Cronulla Chamber of Commerce Carollers

10:00am to 2:00pm, Cronulla Plaza Amphitheatre

TUESDAY 24 DECEMBER

Sutherland Uniting Church Carols by Candlelight

8:00pm to 9:30pm, Forby Gardens Sutherland





CURRENT CONSULTATIONS

We love engaging with our community and value your ideas and feedback. Your input continues to help us shape and improve Council services and projects.

For all consultations and surveys, unless otherwise stated, visit [Join the Conversation at sutherlandshire.nsw.gov.au/jtc](https://sutherlandshire.nsw.gov.au/jtc)

DRAFT GUNNAMATTA PARK PLAN OF MANAGEMENT

Gunnamatta Park is an iconic community space and area of cultural significance for the Sutherland Shire.

We have prepared the Draft Gunnamatta Park Plan of Management to help guide the use and management of this Crown Reserve.

You can give your feedback on this plan until **Thursday 16 January 2025.**



BE STORM-READY THIS SUMMER

Storms can happen at any time of the year, but October to March sees an increased chance of strong winds and heavy rain, which risks floods and flash floods.

PREPARE YOUR HOME FOR STORMS

Check your roof and keep it in good condition, clean gutters, downpipes and drains to prevent blockages, trim trees and overhanging branches, and put away loose items that can blow around in strong winds.

More information at ses.nsw.gov.au/getready

To learn more about how to keep you and your family safe from storms, visit ses.nsw.gov.au/storm

We are part of the Resilient Sydney program, a collaboration of all Sydney Councils to create a metropolis that is connected, inclusive and resilient.



CODE OF MEETING PRACTICE AND PUBLIC FORUM POLICY

The Code of Meeting Practice provides a framework that supports the principles of transparent and accountable decision making.

Our Public Forum Policy has also been revised to provide increased opportunities for community participation.

We are seeking your feedback on these important changes until **Saturday 18 January 2025.**



ANIMAL SHELTER

ANIMAL SHELTER OPEN DAY

SATURDAY 7 DECEMBER, 9:30AM TO 2:00PM

8 Production Road, Taren Point

Join us for a fun-filled day with expert dog training demonstrations, market stalls, a BBQ, and face painting.

Meet our shelter animals and enjoy half-price adoption fees!

More information at go.ssc.nsw.gov.au/OpenDay



LIBRARIES

libraries.sutherlandshire.nsw.gov.au
Book online for all events

WHAT'S ON

READING CHALLENGES FOR ALL AGES!

1 December 2024 to 31 January 2025

Everyone can challenge themselves this summer to read books and go in the draw to win prizes! Find a challenge and pre-register on Beanstack now.



KIDS SCHOOL HOLIDAY ACTIVITIES

Various dates and library locations

The library is buzzing with exciting events for kids these school holidays, with mini beast storytimes and crafts, a performance by Funky Bugs and Read with the Cats. Bookings open on **Monday 2 December!**

TRAVELLING STICK INSECTS

Monday 2 December to Thursday 30 January at various libraries

To get in the Mini Beast spirit this summer, we are hosting a travelling stick insect display at the libraries. Unleash your inner mini beast these school holidays by visiting our libraries to see these friendly critters up close and personal.



'TIS THE SEASON TRIVIA NIGHT

Wednesday 11 December, 6:30pm to 8:00pm at Sutherland Library

Do you love a trivia night? 'Tis the season for a Christmas-themed evening of quizzes and brain teasers for the whole family. Enjoy fun challenges between rounds and, if you can sleigh a Christmas dress-up, there'll be prizes for best dressed.

GIFT WRAP PARTY

Wednesday 18 December, 6:00pm to 8:00pm at Sutherland Library

Need somewhere quiet away from home to wrap your Christmas gifts? Join us at Sutherland Library where you can enjoy some festive jingles and snacks while you wrap the night away. Bring along the kids to be entertained by colouring in their own wrapping paper.



RESOURCES OF THE MONTH

WHO ELSE WRITES LIKE...?

Desperate for gift inspiration or just a great author you haven't read before? **'Who Else Writes Like'** can provide a whole new shelf of choices. Quick and easy to use, get similar author suggestions in minutes.

KIDS RESOURCE OF THE MONTH - WHO NEXT?

Did your child or grandchild like the Goosebumps series by R. L. Stine? Then you might also like Chris Priestley, Lemony Snicket, Robert Swindells and Robert Westall. With **'Who Next?'** children who have already enjoyed stories by one writer can find other authors they will enjoy reading.



SUBSCRIBE TO OUR LIBRARY EMAIL NEWSLETTER

Receive the latest news and events from Libraries at bit.ly/SubscribeeNewsletter

CHILDREN

SUMMER SCHOOL HOLIDAYS FUN!

Check out our fantastic lineup of school holiday activities to help keep children entertained.

There's an exciting mix of free and affordable activities facilitated by our specialist staff, industry professionals or partnering organisations. Don't miss out on the fun!

Find out what's on at sutherlandshire.nsw.gov.au/schoolholidays



2025 EARLY EDUCATION AND CARE POSITIONS

Apply now for care with our award-winning Children's Services team. Vacancies will be available in early 2025 for children aged 2-5 years in some of our 11 Early Education Centres.

Join our preschool program in 2025 and be school ready. Our experienced and nurturing teams provide quality learning programs in our spacious environments.

Phone 02 9710 0466 to arrange a tour, and apply for care online at sutherlandshire.nsw.gov.au/childcare



OPENING HOURS OVER THE HOLIDAYS

Some of our services change their hours during the summer holidays, especially over the Christmas and New Year period. For changes to hours or closures for our Customer Service, Libraries, Hazelhurst and Leisure Centres, keep an eye on our website from mid-December. Find out more at sutherlandshire.nsw.gov.au

YOUTH

SUMMER SKILLS

MONDAY 13 JANUARY - FRIDAY 17 JANUARY 2025

Various locations in Sutherland Shire

Are you a young person under 25 and looking to upskill?

We're offering the opportunity to take part in our Summer Skills program where you can access a range of certifications, completely free!

- **Monday 13 and Tuesday 14 January**
Mental Health First Aid (2-day course)
- **Wednesday 15 January**
First Aid (1-day course)
- **Friday 17 January**
White Card (1-day course)

Empower yourself with skills that help you and the community.

Tickets are limited to one session per participant.

Find out more at sutherlandshire.nsw.gov.au/summer-skills



HAZELHURST

hazelhurst.com.au

To book your place in our events and programs, visit bit.ly/WhatsOnHazelhurst or call 02 8536 5700.

IN THE HAZELHURST GALLERY

SIXTY: THE JOURNAL OF AUSTRALIAN CERAMICS 60TH ANNIVERSARY 1962-2022

Saturday 30 November 2024 to Saturday 25 January 2025

The Australian Design Centre, in partnership with The Australian Ceramics Association, presents *SIXTY: The Journal of Australian Ceramics 60th Anniversary 1962-2022*.

The 22 ceramic artists selected for this exhibition represent their contemporary peers and those who came before them throughout the history of Australian ceramics. All have a strong and enduring connection to The Journal of Australian Ceramics.

SIXTY: The Journal of Australian Ceramics 60th Anniversary 1961-2022 is an Australian Design Centre (ADC On Tour) national touring exhibition, presented with assistance from the Australian Government Visions of Australia program.

CONDUIT

Saturday 30 November 2024 to Saturday 25 January 2025

Conduit brings together teachers from Hazelhurst Arts Centre, Gymea TAFE's Ceramic Design Studio and TAFE ceramics studios from across Sydney.

The exhibition is a celebration of ceramics, its elemental nature, and the way in which it is drawn from the ground and manifested in final objects. *Conduit* acknowledges the journey from material to object and that the transmission of knowledge from teacher to student is as fundamental as the outcome.

To further emphasise the importance of inherited knowledge passed down through the medium, each Hazelhurst teacher has also selected an exceptional student from their classes to exhibit alongside them.

Both exhibitions are open 10:00am to 4:00pm daily, free admission. See hazelhurst.com.au for opening hours over the festive period.

Image: Glenn Barkley, *thatisnocountry4oldmen (sailing2byzantium)* (detail), 2022. Photograph by Greg Piper; Bridget Willis, *Gathering*, 2023. Photograph by Greg Piper.



SUBSCRIBE TO HAZELHURST EMAIL NEWS

Receive the latest news from Hazelhurst at bit.ly/hazelhurstnews

IN THE BROADHURST GALLERY
SHIREABILITY ART AWARD 2024

Friday 6 December to Tuesday 17 December

The biennial ShireABILITY Art Award provides an opportunity for artists of all ages who live with disability who either live, work, go to school, or attend community programs in the Sutherland Shire to share their creative talent. See also page 1 for how to vote in the People's Choice Awards!

CONNECTIVITY

Friday 20 December to Tuesday 14 January

A vibrant exhibition showcasing works by students from our popular ceramics classes, led by ceramic artist Claudia Citton. For the students, Hazelhurst is the place where connections are made, and where creative journeys begin, end, and flourish.

Images L to R: Jakobe Thomas, *Pain*, 2024; Valerie Giammarco, *Obsolescence*, 2024.



WHAT'S ON

CLAY DAY

Saturday 30 November, 10.00am to 4.00pm

Hazelhurst Art Centre and TAFE NSW GyMEA Ceramic Design Studio are collaborating to celebrate the joy of clay. Join us for a day of open studios, demonstrations, floor talks, lectures, and hands-on workshops. Free event.

Images L to R: Photograph by Flore Vallery-Radot; Courtesy Australian Design Centre. Photograph by Greg Piper.



LATEST NEWS

HELP US BUILD FOR THE FUTURE OF SUTHERLAND SHIRE

We're looking for qualified architects and urban designers to review and provide independent advice on planning proposals and development applications. Apply by **11 December 2024**, to commence in early 2025 for a term up to 3 years.

Visit sutherlandshire.nsw.gov.au/DRP



TERM 1 ART CLASSES

Enrol now

There are creative learning opportunities for all ages at Hazelhurst in Term 1 of 2025. Start the new year by learning a new skill, return to a previous pastime or develop your creative practice. Choose from painting, pottery, drawing, illustration, sculpture, mosaics, and more. Enrol now!

SUMMER SCHOOL HOLIDAYS

Enrolments open Monday 2 December

Our January school holiday program is filled with exciting creative workshops for families, children and teens! From clay and painting to drawing and mixed-media, Little Holiday Makers and more, there is something fun for everyone to enjoy. Enrol from 6:00am online or from 9:00 by phone and in person.

Images L to R: Photograph by Flore Vallery-Radot; Hazelhurst image.



LITTLE ART MAKERS

Wednesdays, 9:30am to 10:30am during school term

Introduce your pre-schooler to the world of art through discovery and creative learning! Excite their senses and develop their skills as they engage with our current exhibitions through a gallery tour, storytime and an exhibition-inspired artmaking activity. Suitable for children age 3 to 5 years. \$10.00 per child. Bookings essential.

ECO NEWS AND WASTE WISE LIVING

HELP PROTECT OUR LOCAL BUSHLAND VOLUNTEER WITH BUSHCARE

With the weather warming up, it's the perfect time to get out and about and lend a hand to our local bushland. As temperatures rise, weeds are growing quickly, threatening the delicate balance of our native ecosystems. Whether you're an experienced volunteer or new to bushcare, now is the ideal moment to make a real difference.

Join us in tackling the weeds and supporting the restoration of our natural landscapes. Your efforts today will help protect native species and ensure our bushland stays beautiful for generations to come!

Get involved - volunteer today - visit sutherlandshire.nsw.gov.au/Bushcare-Volunteers



GETTING STARTED WITH SOLAR?

We've subscribed to SunSPOT, a solar and battery calculator, to help residents work out the best solar system for your household, business, or school. Simply enter any Shire address to figure out the recommended solar system size, layout, and cost, and see how it can help reduce your electricity bills - completely free of charge.

It only takes ten minutes, get started today.

Visit sutherlandshire.nsw.gov.au/solar



GET INVOLVED IN PLANTING FLOATING WETLANDS AT BURNUM BURNUM SANCTUARY.

Like a natural wetland, floating wetlands help remove pollutants from waterways and provide safe habitats for wildlife. Planted with native species, floating wetlands harmonise with our waterways and are a green solution to improve water quality.

Come along and help us plant these wonderful devices!

Learn more at sutherlandshire.nsw.gov.au/floatingwetland



SUMMER WOODCHIPPING SERVICE

Council offers a domestic woodchipping service for Sutherland Shire residents during daylight saving months each year. This service turns bulky tree branches and trunks into woodchips. You must be a resident and produce proof of identification on the day. This service is not available for use by commercial operators or commercial vehicles.

You're welcome to take a load of mulch home with you. Bring buckets to fill (not bags). The woodchipper will not be onsite on the day.

For more information on what is acceptable and requirements for attending this event, visit go.ssc.nsw.gov.au/WOODCHIP2425

Where: Council Depot, 13-15 Ethell Road, Kirrawee

Time: 9:00am to 3:00pm

Upcoming dates:

- 14 December 2024
- 8 February 2025
- 11 January 2025
- 8 March 2025.



4-20 Eton Street, Sutherland NSW 2232

Locked Bag 17, Sutherland NSW 1499

W sutherlandshire.nsw.gov.au

E ssc@ssc.nsw.gov.au

P 02 9710 0333

 SutherlandShireCouncil

 SutherlandShireCncl

 suthshirecncl

