

FIGURES

(Figures 14-27 only)





Legend

- Subject Land
- Plant Community Type**
- PCT 3546: Coastal Sands Littoral Scrub-Forest (EEC - BC Act, CEEC - EPBC Act)
- PCT 3788: Coastal Fore-dune Wattle Scrub
- PCT 3922: Sydney Coastal Sand Swamp Scrub (EEC - BC Act)
- PCT 4028: Estuarine Swamp Oak Twig-rush Forest (EEC - BC Act/EPBC Act)
- PCT 4097: Samphire Saltmarsh (EEC - BC Act)
- PCT 4103: Sporobolus virginicus Saltmarsh (EEC - BC Act)
- Exotic Vegetation
- Exotic Grassland and Cleared Land
- Dune/Foreshore
- Water

Image Source:
Image © NearMap 2023
Dated: 6/9/2023



Coordinate System: MGA Zone 56 (GDA 94)

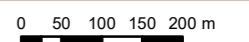
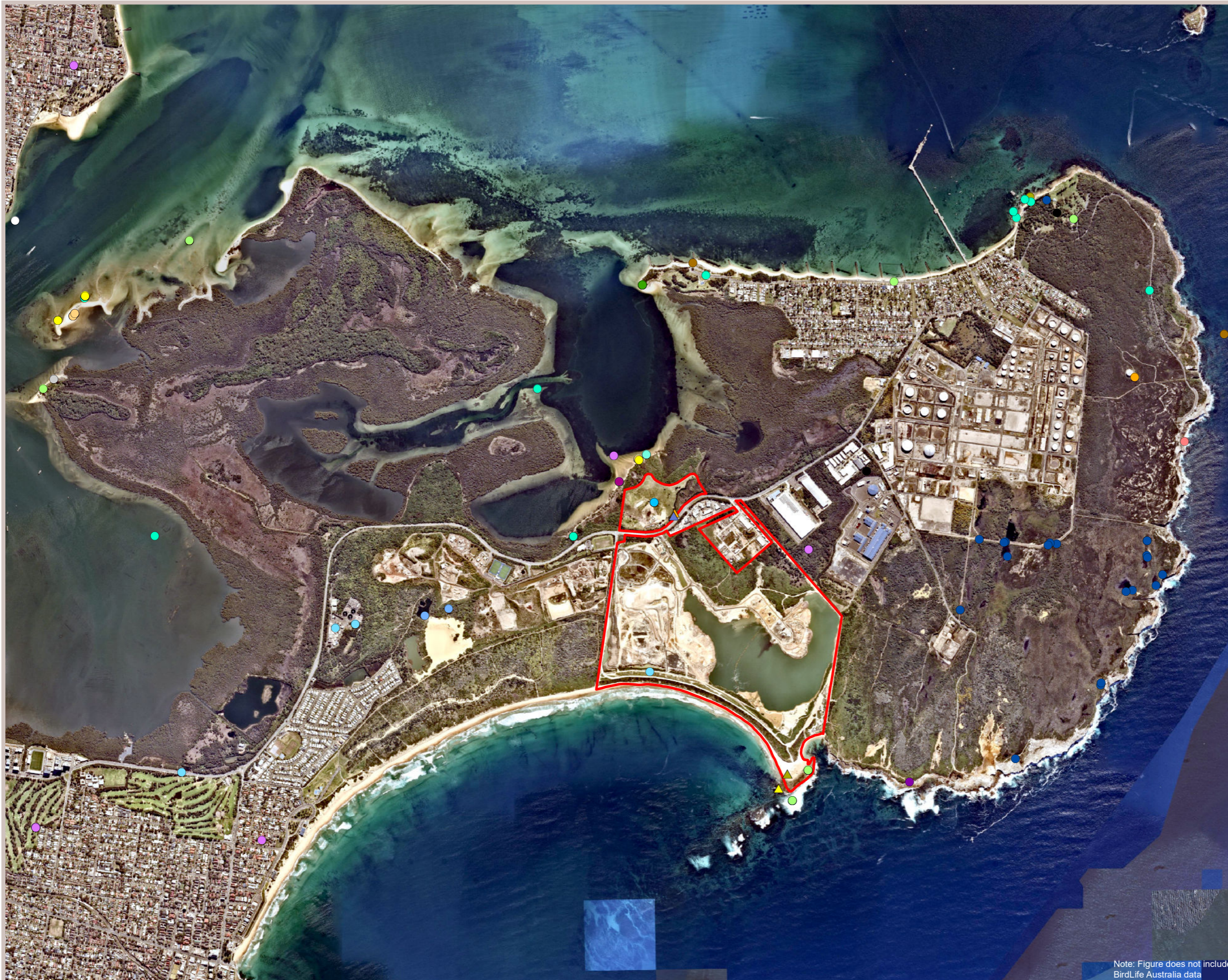


Figure 14. Terrestrial vegetation communities in the subject land



Legend

Subject Land

Threatened Fauna (CE - 2018)

- ▲ Large Bent-winged Bat
- ▲ Little Bent-winged Bat
- ▲ Little Tern
- ▲ Sooty Oystercatcher

Threatened Fauna (BioNet - Post 2018)

- Bar-tailed Godwit
- Black Bittern
- Black-browed Albatross
- Caspian Tern
- Common Sandpiper
- Crested Tern
- Eastern Curlew
- Eastern Osprey
- Green and Golden Bell Frog
- Grey-headed Flying-fox
- Grey-tailed Tattler
- Large Bent-winged Bat
- Little Tern
- Pacific Golden Plover
- Pied Oystercatcher
- Powerful Owl
- Red-necked Stint
- Ruddy Turnstone
- Short-tailed Shearwater
- Sooty Oystercatcher
- Sooty Tern
- Wallum Froglet
- Wedge-tailed Shearwater
- Whimbrel
- White-bellied Sea-Eagle

Note: Figure does not include BirdLife Australia data

Image Source:
Image © NearMap 2023
Dated: 6/9/2023

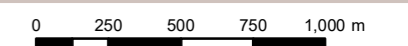


Figure 15. Threatened species recorded on and surrounding the subject land

Proposed biodiversity corridors on the Kurnell Peninsula



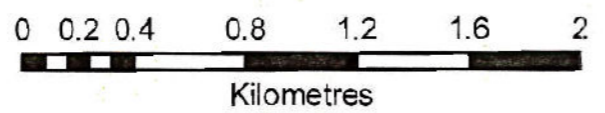
Legend

- Subject Land
- Masterplan**
- Development
- District Park
- Local Park
- Regional Open Space
- Regional Open Space (Land to be Dedicated)

Legend

Biodiversity corridors

- Established
- Planned
- Provisional
- National Park



Copyright Department of Environment and Climate Change (NSW) April, 2009
 This map is not guaranteed to be free from error or omission
 The Department of Environment and Climate Change (NSW) and its employees
 disclaim liability for any act done on the information in the
 map and any consequences of such acts or omissions



Image Source:
 Image © NearMap 2023
 Dated: 6/9/2023

Coordinate System: MGA Zone 56 (GDA 94)

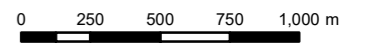


Figure 16. Corridors present in the locality versus new corridors proposed in the subject land

I:\...117213\Figures\RP3\2023\1128\Figure 16. Corridors present in the locality versus new corridors proposed




- Legend**
- Subject Land
 - Aquatic Habitat**
 - Freshwater Lake
 - Coastal Freshwater Wetlands
 - Estuarine Wetlands
 - State Environmental Planning Policy (Resilience and Hazards) 2021**
 - Coastal Wetlands
 - Proximity Area for Coastal Wetlands
 - Nationally Important Wetlands**
 - Towra Point Estuarine Wetlands
 - Ramsar Wetlands**
 - Towra Point Nature Reserve

Image Source:
Image © NearMap 2023
Dated: 6/9/2023

Data Source:
State Environmental Planning Policy
(Resilience and Hazards) 2021
© State Government of NSW and
Department of Planning and Environment 2023

Ramsar Wetlands and Important Wetlands
© Department of Environment and Energy 2018


 Coordinate System: MGA Zone 56 (GDA 94)

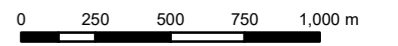


Figure 17. Wetland habitat in and surrounding the subject land

I:\...17213\Figures\RP3\20231123\Figure 17. Wetland habitat in and surrounding the subject land

Boat Harbour Aquatic Reserve

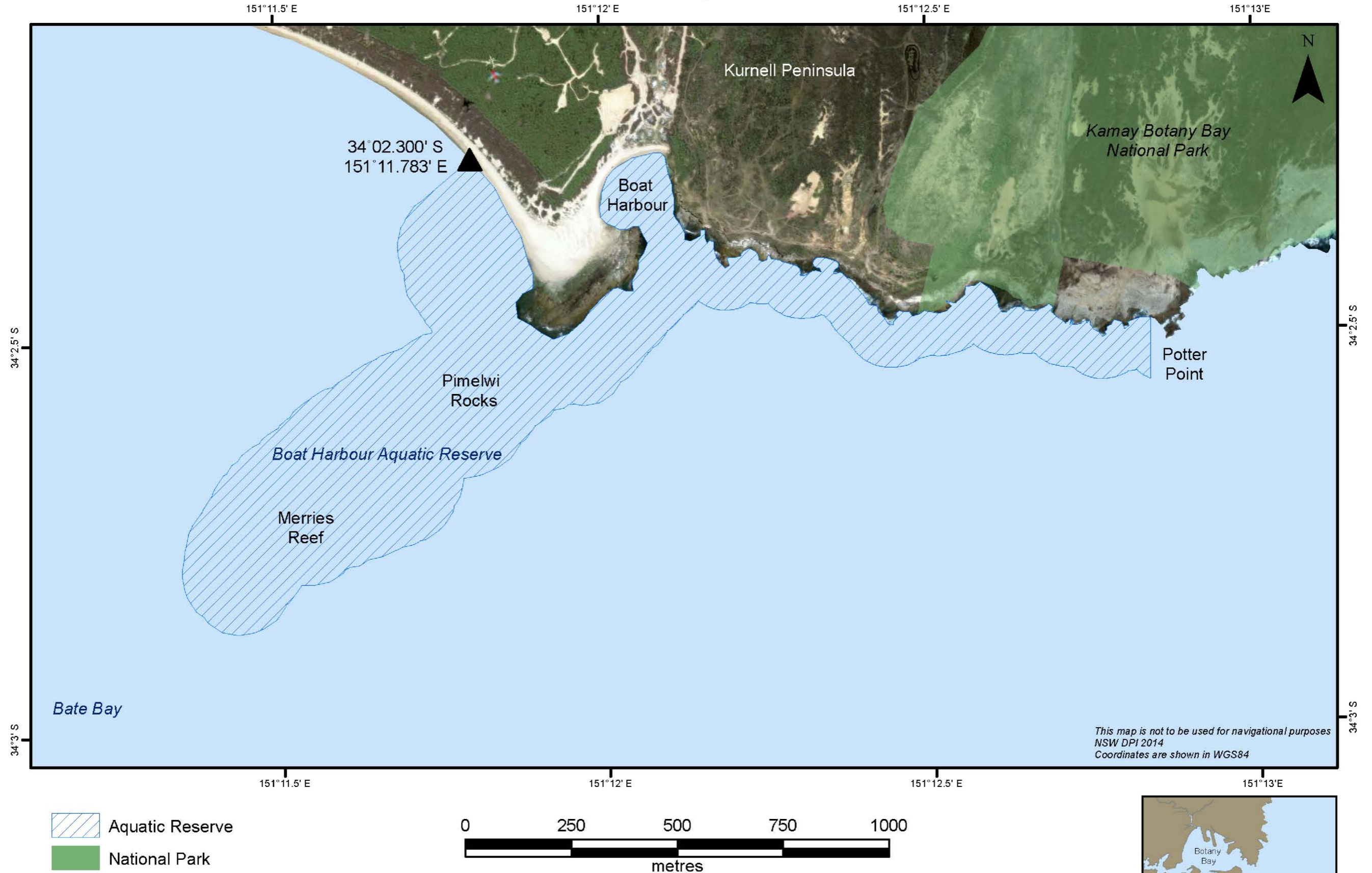
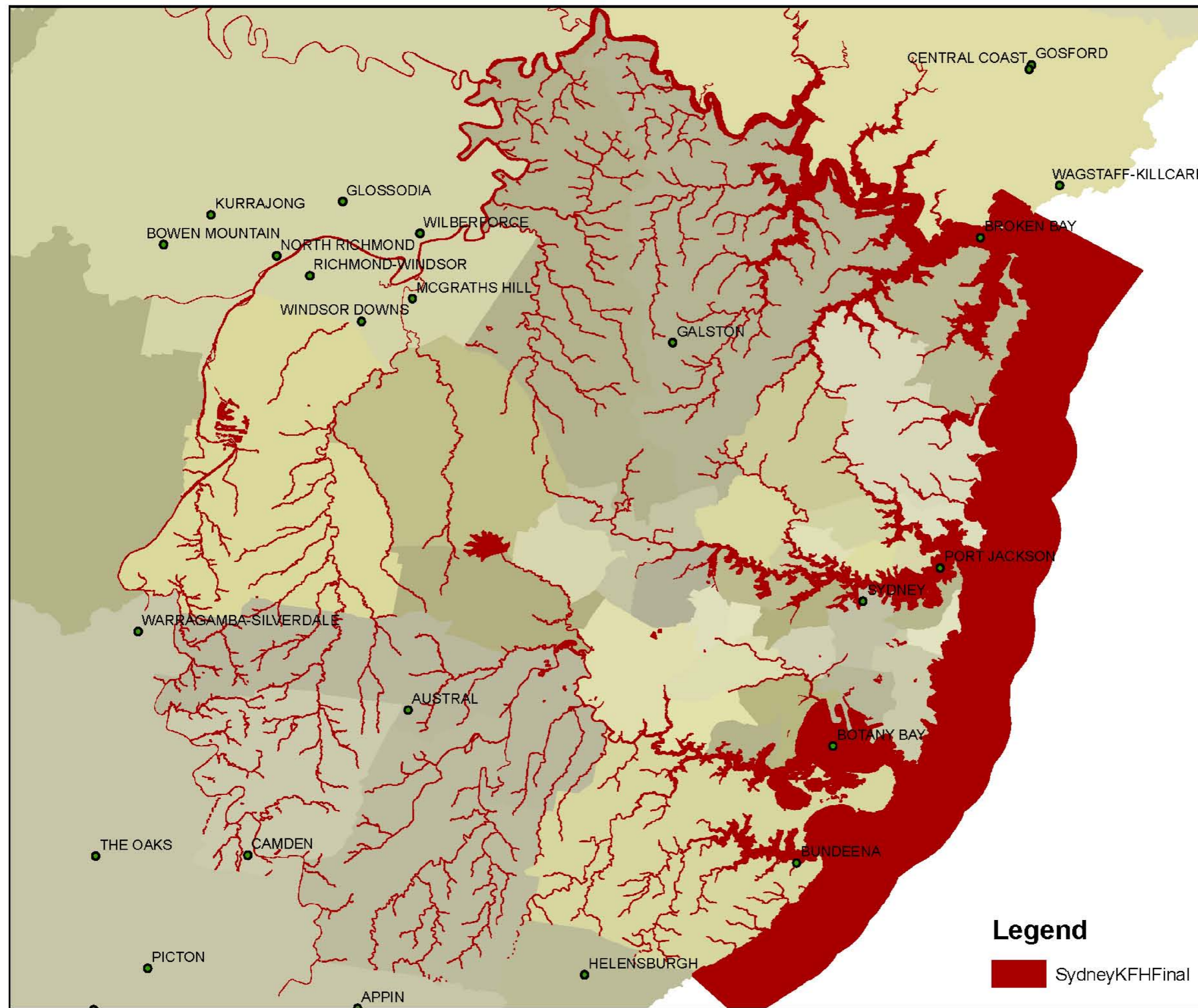
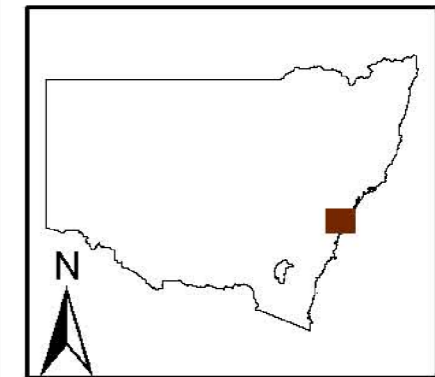


Figure 18. Boat Harbour Aquatic Reserve



Key Fish Habitat LGAs in SYDNEY AREA



Source: data from the Australian Geoscience, NSW DPI, NSW DECC and NSW LPI
Datum: Geocentric Datum of Australia (GDA)
Grid: Mapping Grid of Australia (MGA94)

The State of New South Wales, the Department of Primary Industries, its employees, officers, agents or servants are not responsible for the result of any actions taken on the basis of the information contained on the map, or for any errors, omissions or inaccuracies that may occur on this map.

Prepared by GIS section, Fisheries Ecosystems Branch, Division of Fisheries, Compliance and Regional Relations, NSW DPI.

0 2.5 5 10
Kilometres

Legend

SydneyKFHFinal



**NSW DEPARTMENT OF
PRIMARY INDUSTRIES**

Figure 19. Key Fish Habitat in the locality

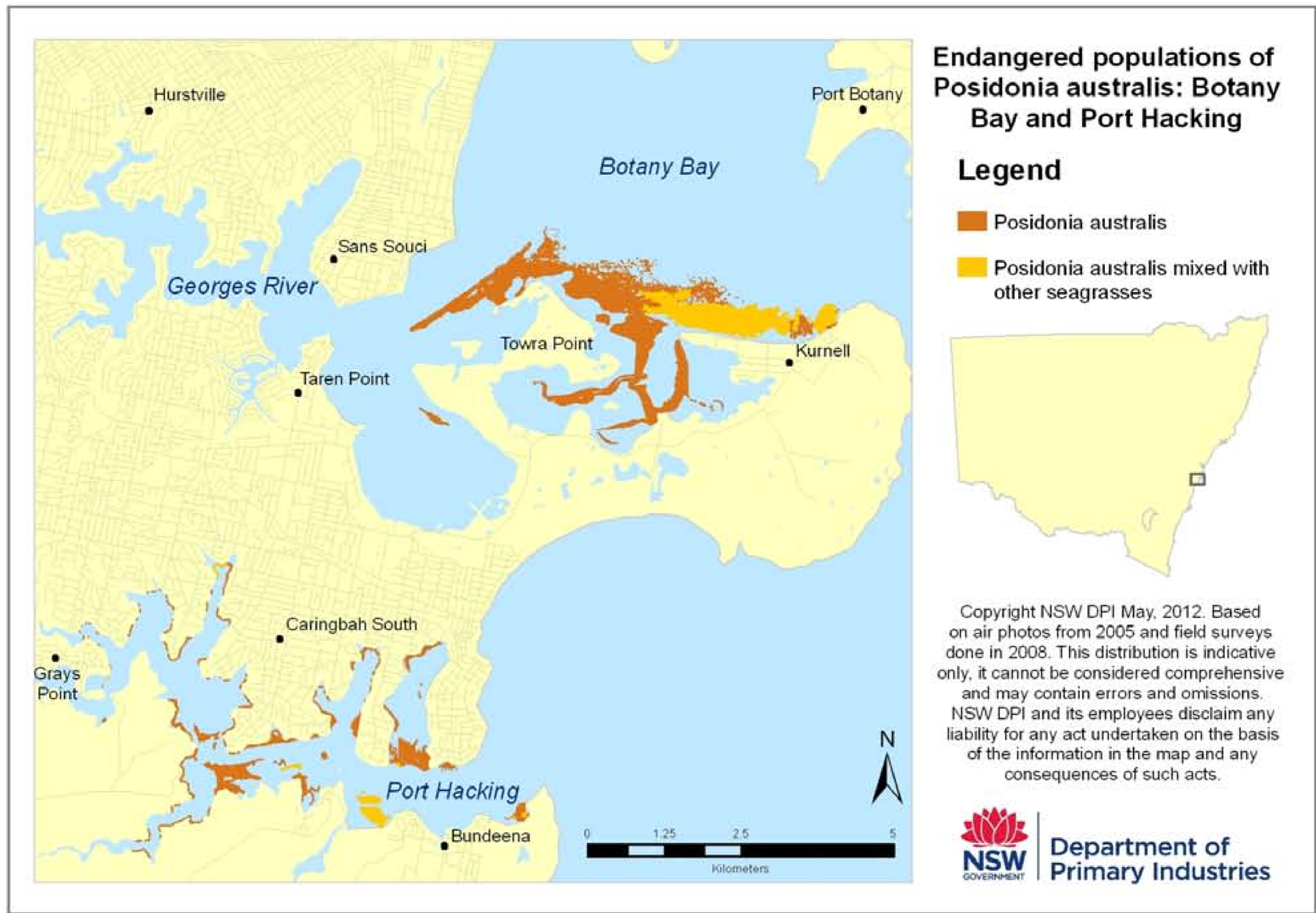


Figure 7: Map showing the known extent of the endangered population of *Posidonia australis* in Botany Bay and Port Hacking.

Figure 20. Endangered populations of *Posidonia australis*



Legend

- Subject Land

Probability of Estuarine GDEs

- High
- Medium
- Low

Probability of Terrestrial GDEs


- High
- Medium
- Low

Probability of Wetland GDEs

- High
- Low

Image Source:
Image © NearMap 2023
Dated: 6/9/2023

Data Source:
Probable Vegetation Groundwater Dependent
Ecosystems - Sydney Metro
© State Government of NSW and
Department of Planning and Environment 2023


 Coordinate System: MGA Zone 56 (GDA 94)

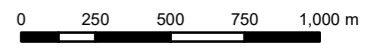


Figure 21. Groundwater Dependant Ecosystems in the locality

I:\...17213\Figures\RP3\20231128\Figure 21. GDEs_locality



Legend

Subject Land

Conservation Significance

- High
- Medium
- Low

Image Source:
Image © NearMap 2023
Dated: 6/9/2023



Coordinate System: MGA Zone 56 (GDA 94)

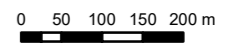


Figure 22. Vegetation conservation significance



Figure 23. Predicted overland flow paths



Figure 24. Predicted flooding



- Legend**
- Subject Land
 - Areas set aside for development
- Opportunities for Maintenance and Restoration**
- PCT 3788: Coastal Foredune Wattle Scrub
 - PCT 3922: Sydney Coastal Sand Swamp Scrub (EEC - BC Act)
 - PCT 4028: Estuarine Swamp Oak Twig-rush Forest (EEC - BC Act/EPBC Act)
 - PCT 4097: Samphire Saltmarsh (EEC - BC Act)
 - PCT 4103: Sporobolus virginicus Saltmarsh (EEC - BC Act)
 - Landscaped Open Space

Image Source:
Image © NearMap 2023
Dated: 6/9/2023



Coordinate System: MGA Zone 56 (GDA 94)

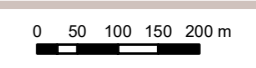
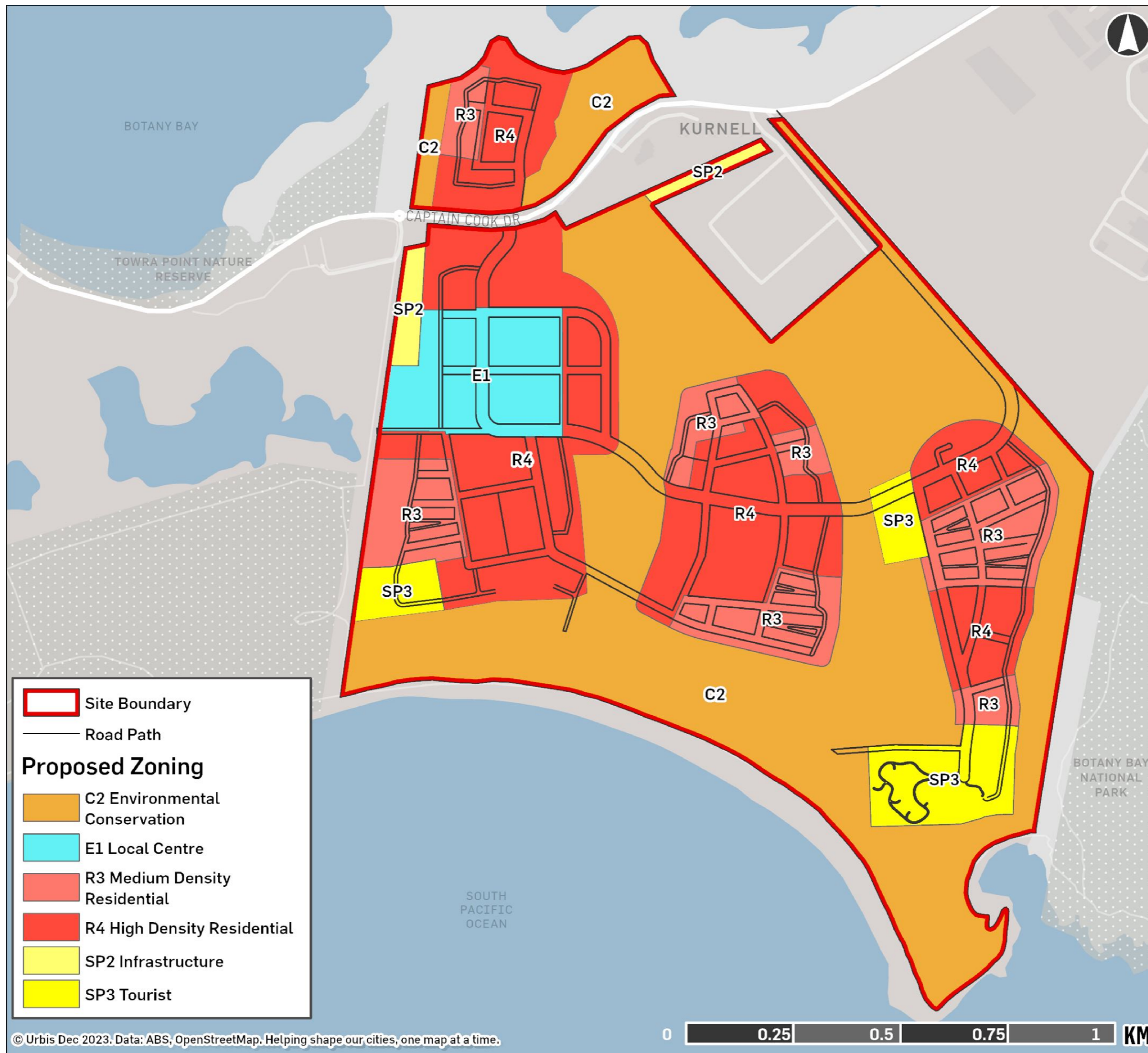


Figure 25. Opportunities for maintenance and restoration of vegetation and habitat corridors

I:\... \17213\Figures\RP3\20231128\Figure 25. Opportunities for maintenance and restoration



Figure 26. Future corridor widths



© Urbis Dec 2023. Data: ABS, OpenStreetMap. Helping shape our cities, one map at a time.

0 0.25 0.5 0.75 1 KM

Figure 27. Proposed zoning

Image Source: Urbis 2023